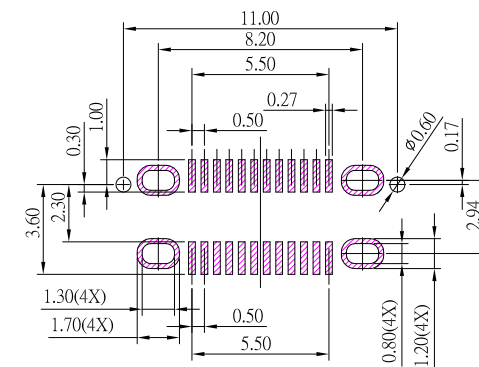
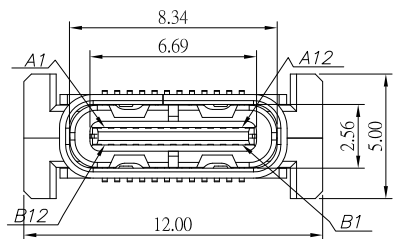




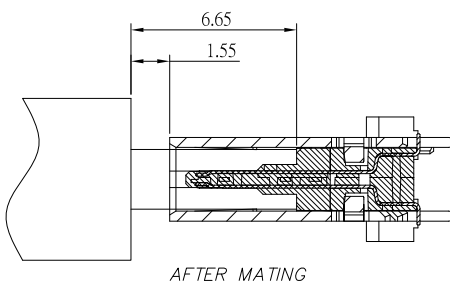
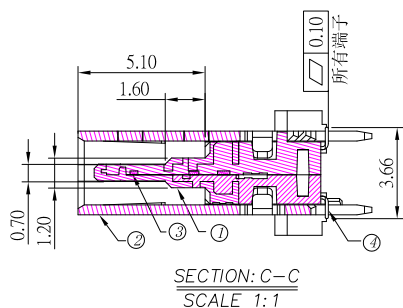
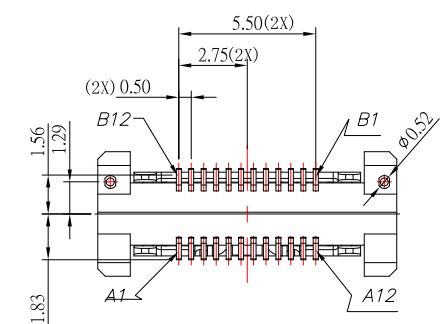
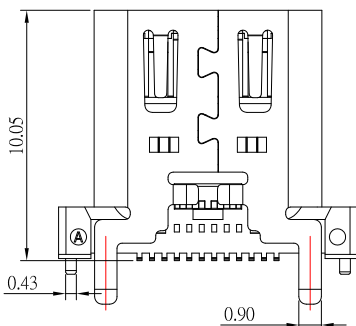
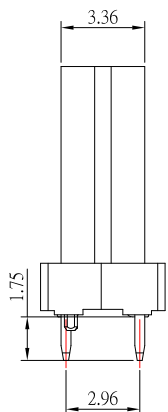
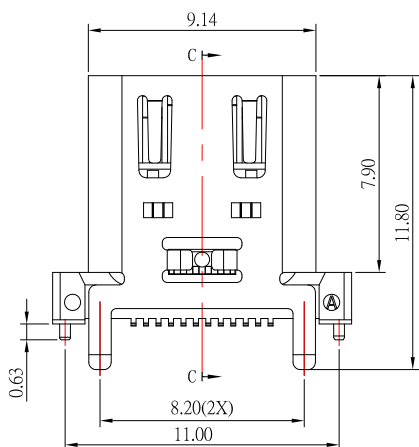
# SBC-240VSE13-31x-S331

鍍層厚度:

Blank : 1u"
2 : 15u"
3 : 30u"



RECOMMENDED P.C.B. LAYOUT



## SPECIFICATIONS

### Electrical:

1. Rating: 5.0V, 3.0 A
2. Dielectric Withstand Voltage: 100V AC
3. Contact Resistance: 40 mΩ Max
4. Insulation Resistance: 100 MΩ Min

### Mechanical:

1. Connector Mate and Unmate Force
  - 1.1 Mate force: 5~20 N
  - 1.2 Unmate force: 8~20 N

### Material:

1. Housing: PA9T
2. Contact: C18400
3. Shell: SUS

### Finish:

1. Contact: Plated Gold in Mating Area ;  
Gold Plated on Solder Balls ;  
Nickel under plated overall
2. Shell: Nickel under Plated surface layer

**CONTACT** 建倚科技股份有限公司  
CONTACT TECHNOLOGY CORP.

TOLERANCE UNLESS OTHERWISE STATED:  
Up to 5 ±0.2  
Above 5 ~ 15 ±0.3  
Above 15 ~ 30 ±0.4  
Above 30 ~ 50 ±0.5  
Angle ±0.3

3RD. ANGEL'S

UNITS MM

DRAWN BY:	DATE	MAT'L	TITLE	CONNECTOR
Jack Lu	01/22/24	FINISH	MODLE	USB 3.1 TYPE C 直立式 SMT L10.05 mm 外殼翻長1.75
CHECKED BY:	DATE	SCALE	DWG NO.	SBC-240VSE13-31x-S331
Jacky Chen	01/22/24	1 : 1	PART NO.	SBC-240VSE13-31x-S331
APPROVED BY:	DATE	SHEET NO.	1 of 1	SIZE A4 VER R1
Tony Kao	01/22/24			

1	更新Contact材質	Jack	012224
ITEM NO.	DESCRIPTION	DRAWN	DATE